

AF-EM Series Cabinets - an improved cabinet design that boasts Aesthetics, Strength and Flexibility coupled with new user friendly features offers professional solutions to our valuable clients from the various industries – **Security, I.T., Networking, Audio Visual, Military, Data Center Hosting, Banking, Aviation, Marine, Telecommunications** etc.

Compatible for rack mounting of an array of equipments including branded and third party Servers, DVRs, Multiplexers and Base Stations, users are spoilt for choice with our wide range of *AF-EM Series* cabinet variants. Non-standard and customised sizes fabricated to your requirements are also available. Please speak to our friendly and experienced sales engineers. We provide *The Complete Solution* to your equipment housing needs.



AF-EM Series 19" Cabinet



AF-EM Series 26" Cabinet

AF-EM Series Cabinets are manufactured in compliance to international standards IEC 60297, EIA-310-D, DIN 41494-7

AF EM 19" Cabinets – 600mm Width

"U"	Height	Overall Depth / Order Number				
		600	800	1000	1100	1200
48U*	2340mm	AF-EM-6648	AF-EM-6848	AF-EM-61048	AF-EM-61148	AF-EM-61248
47U	2290mm	AF-EM-6647	AF-EM-6847	AF-EM-61047	AF-EM-61147	AF-EM-41247
45U	2200mm	AF-EM-6645	AF-EM-6845	AF-EM-61045	AF-EM-61145	AF-EM-41245
42U	2070mm	AF-EM-6642	AF-EM-6842	AF-EM-61042	AF-EM-61142	AF-EM-61242
37U	1845mm	AF-EM-6637	AF-EM-6837	AF-EM-61037		
32U	1625mm	AF-EM-6632	AF-EM-6832			
27U	1400mm	AF-EM-6627	AF-EM-6827	AF-EM-61027		
22U	1180mm	AF-EM-6622	AF-EM-6822	AF-EM-61022		
18U	1000mm	AF-EM-6618	AF-EM-6818			
12U	735mm	AF-EM-6612	AF-EM-6812			

AF EM 26" Cabinets – 800mm Width

"U"	Height	Overall Depth / Order Number			
		800	1000	1100	1200
48U*	2340mm	AF-EM-8848	AF-EM-81048	AF-EM-81148	AF-EM-81248
47U	2290mm	AF-EM-8847	AF-EM-81047	AF-EM-81147	AF-EM-81247
45U	2200mm	AF-EM-8845	AF-EM-81045	AF-EM-81145	AF-EM-81245
42U	2070mm	AF-EM-8842	AF-EM-81042	AF-EM-81142	AF-EM-81242
27U	1400mm	AF-EM-8827	AF-EM-81027		

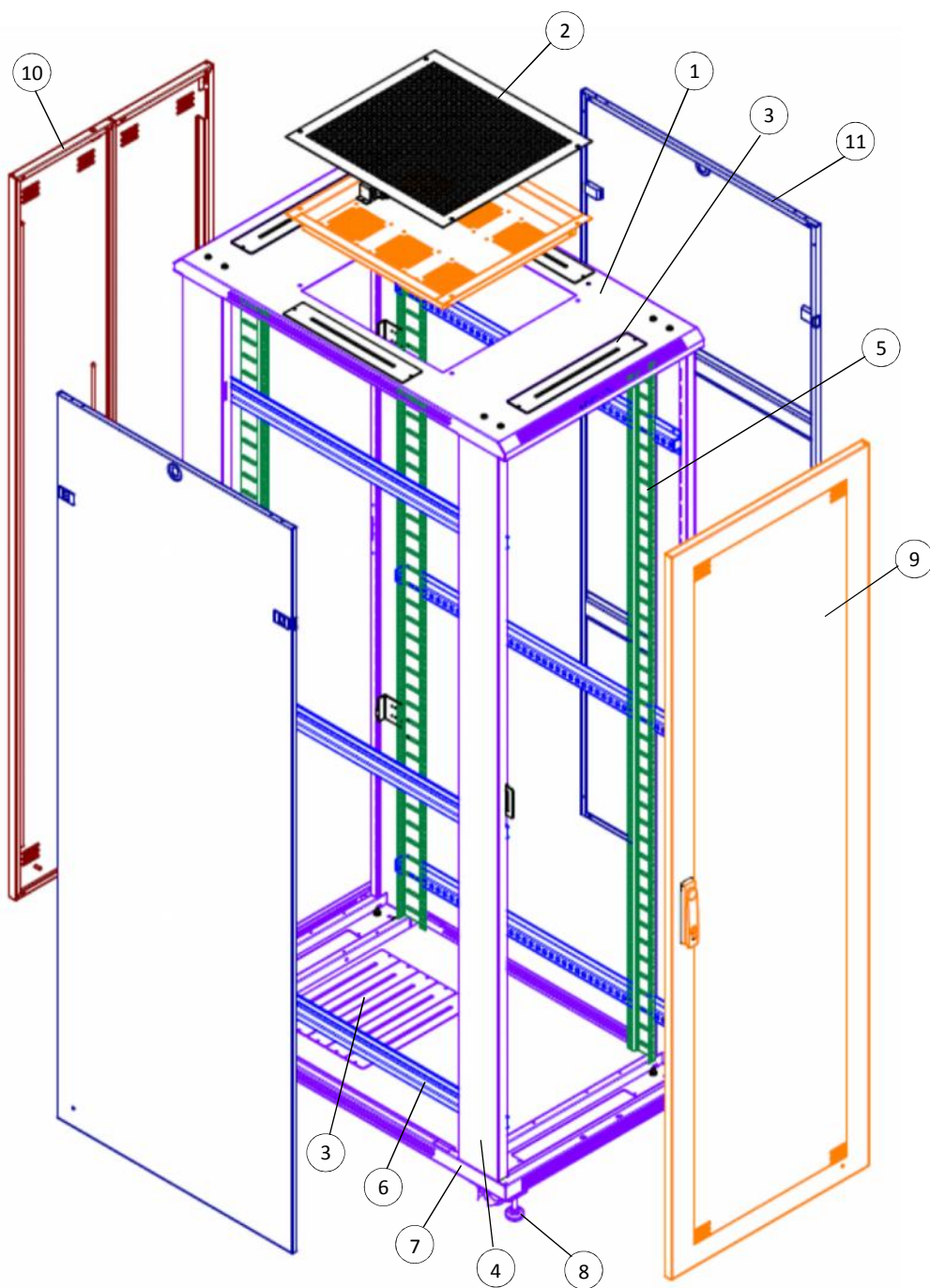
*Non-stock size. Please check with our sales team on delivery lead time

^Customised sizes are also available. Please check with our sales team

AF-EM Series Cabinets

THE PARTS

GrandBright International Pte Ltd



Parts List

1. Vented Top Frame
2. Top Mount Fan Tray
3. Cable Entry w/ Cover Plate
4. Vertical Frame
5. 19" Panel Mount
6. Panel Mount Support
7. Vented Base Frame
8. Castors & Levelling Feet
9. Front Door
10. Rear Door
11. Side Panel

At a glance

- Material: Sheet Steel
- Finishing: Epoxy polyester powder coated
- Black (RAL9004) or Light Grey (RAL7035) available
- Static weight load: 1000kg
- Index of Protection: 20 (IP20)
- Modular design with superior sturdiness
- Delivered fully assembled and ready to use or
- Nicely flat packed for ease of shipment

Your preferred partner

AF-EM Series Cabinets

NEW FEATURES

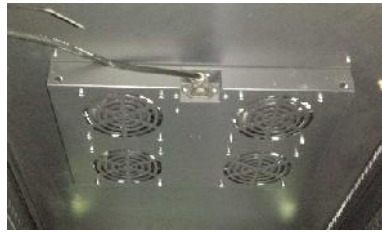
GrandBright International Pte Ltd



Silk-screened "U" indicators

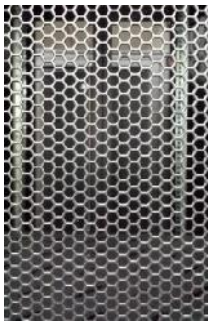


Flushed mounted PDUs!



Top access fan plate for ease of future servicing – if required

Latest hexagon perforation for maximum air flow



Modular Cable Bracket



Improved cable management kit with magnetized cover for 26" racks

ADDONS



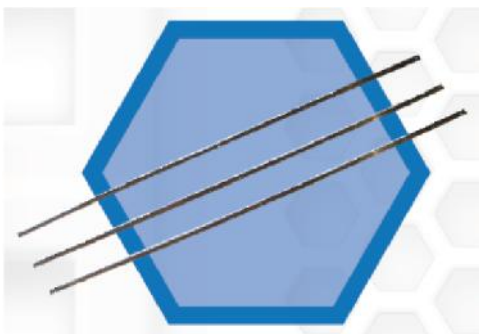
19" Cable Highway



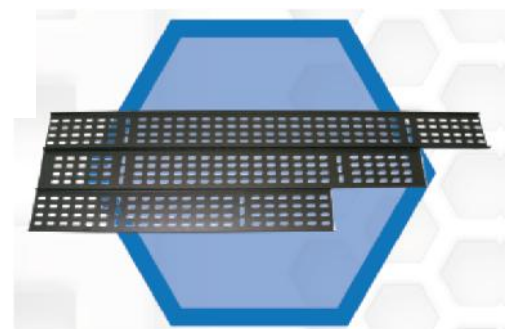
3U 19" Drawer



M6 Hardware Kit



Copper Bar



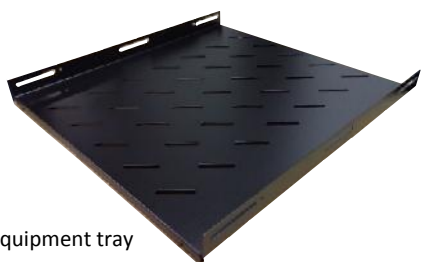
Cable Tray

Your preferred partner

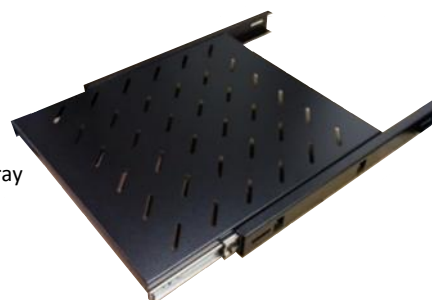
AF-EM Series Cabinets

EQUIPMENT SUPPORT

GrandBright International Pte Ltd



Vented equipment tray



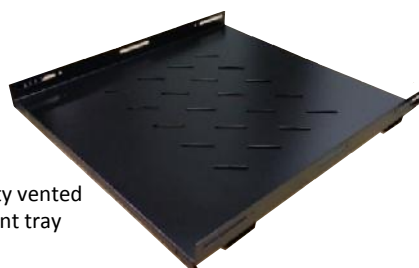
Sliding tray



L-Bracket



Cantilever shelf



Heavy duty vented equipment tray

DOORS & PANELS



Doors

- Tempered glass door c/w perforated side frame & standard swing handle lock
- Fully perforated door c/w standard swing handle lock
- Fully perforated split door c/w standard 3 point swing handle lock

Side Panels

- With quick release latches and lock. Lift-off design
- Internally secured design available
- Customised co-locate side panels can be fabricated
- Customised to fully perforated design can also be fabricated

Standard Colours

- Colour A: RAL 9004, Black
- Colour B: RAL 7035, Light Grey

Options of other colours are available too. Please speak to our sales engineers for more details

Your preferred partner

AF-EM Series Cabinets

POWER

GrandBright International Pte Ltd



UK PDU c/w Switchless Sockets & 1 Master Switch



UK PDU c/w Switchless Sockets & Digital Ammeter



UK PDU c/w Switchless Sockets, Surge Protection, RCCB & 1 Master Switch



IEC PDU c/w 20x C13 + 4x C19 Sockets



IEC PDU c/w 20x C13 + 4x C19 Sockets & Digital Ammeter



Typical UK Power Strip

Plugs & Connectors



13Amp



15Amp



16Amp / 32Amp



IEC C14



IEC C20

Your preferred partner

AF-EM Series Cabinets

PDU – NEW GENERATION

GrandBright International Pte Ltd



Sockets produced according to PANTONE Colours



Hot-Swappable Digital Ammeter
(Voltage, Current, kW & kWh)



Patented integrated plug locking device for IEC C13 / 14



C19 Plug Locking



*Coloured socket PDU lead time will be 4 weeks.

Your preferred partner