

**AF-EA Series Equipment Racks** - an improved rack design that boasts Aesthetics, Strength and Flexibility coupled with new user- friendly features offers professional solutions to our valuable clients from the various industries – **Security, I.T., Networking, Audio Visual, Military, Data Center Hosting, Banking, Aviation, Marine, Telecommunications** etc.

Manufactured in compliance to International Standards IEC 60297-2, ANSI/EIA RS-310-D, DIN 41494 and compatible for rack mounting of an array of equipments including branded and third-party Servers, DVRs, Multiplexers and Base Stations, users are spoilt for choice with our wide range of **AF-EA Series Equipment Rack** variants. Non-standard and customised sizes fabricated to your requirements are also available. Please speak to our friendly and experienced sales engineers. We provide complete solutions to your equipment housing needs.



# AF-EA Series Equipment Racks - Features



# AF-EA Series Equipment Racks - Available Sizes

## AF EA Series 19" Racks – 600mm Width

"U"	Height	Overall Depth / Order Number		
		1000	1100	1200
48U*	2355mm	AF-EA-61048	AF-EA-61148	AF-EA-61248
47U	2310mm	AF-EA-61047	AF-EA-61147	AF-EA-61247
45U	2220mm	AF-EA-61045	AF-EA-61145	AF-EA-61245
42U	2090mm	AF-EA-61042	AF-EA-61142	AF-EA-61242
37U	1865mm	AF-EA-61037		
27U	1420mm	AF-EA-61027		
22U	1200mm	AF-EA-61022		
18U	1000mm	AF-EA-61018		
12U	755mm	AF-EA-61012		

## AF EA Series 26" Racks – 800mm Width

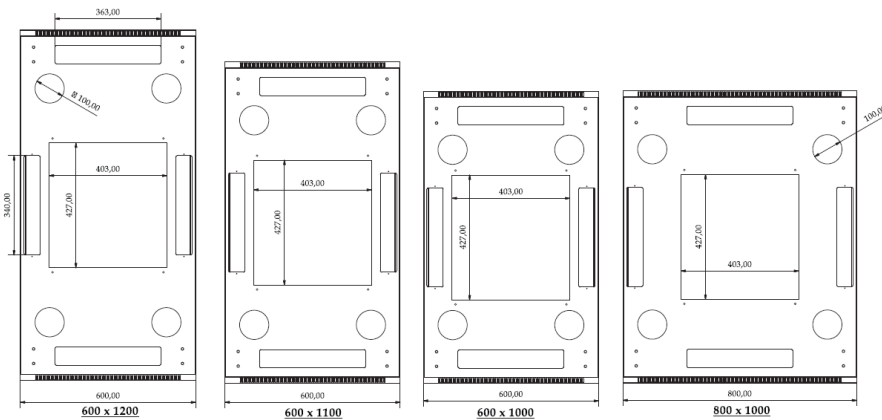
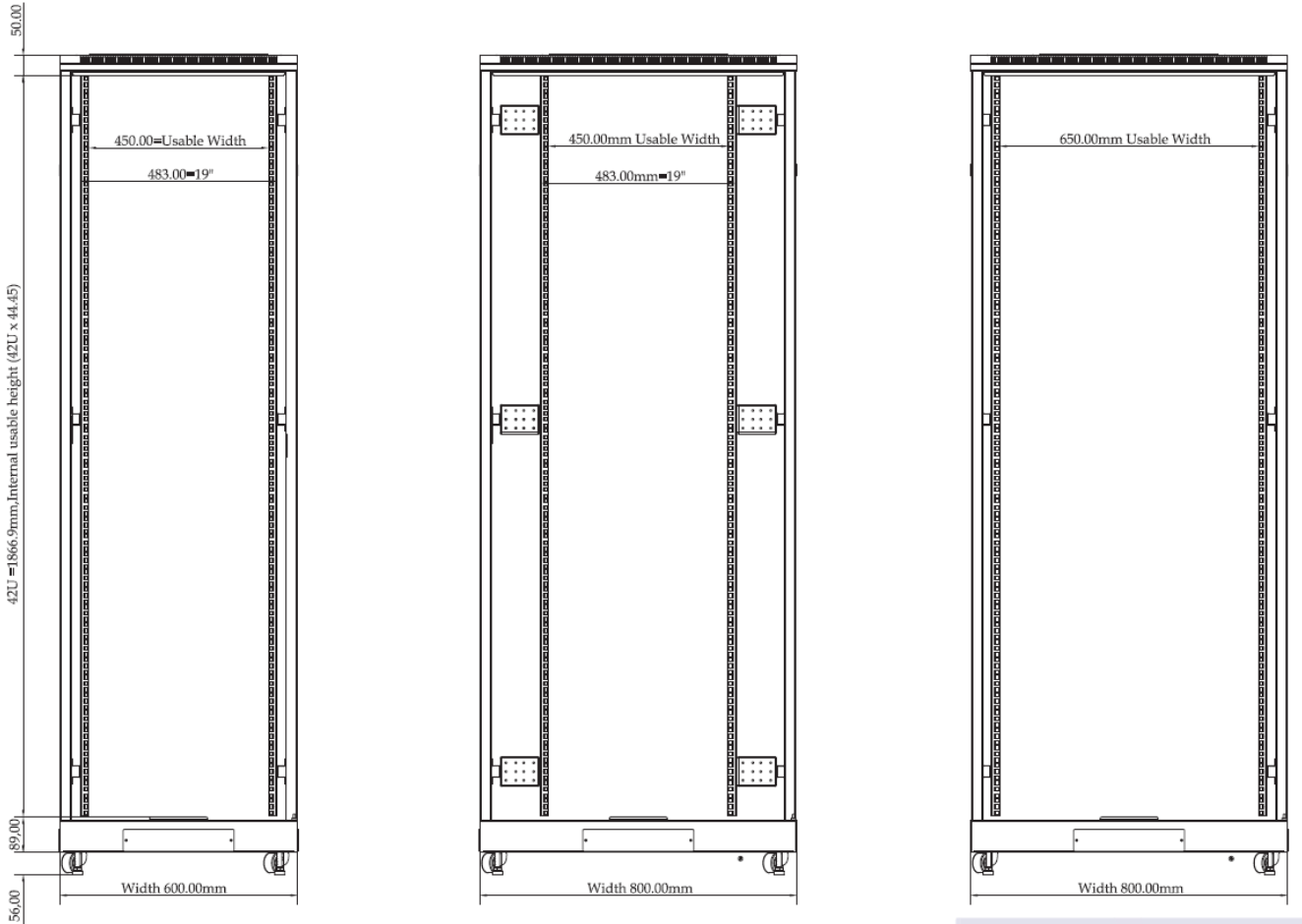
"U"	Height	Overall Depth / Order Number		
		1000	1100	1200
48U*	2355mm	AF-EA-81048	AF-EA-81148	AF-EA-81248
47U	2310mm	AF-EA-81047	AF-EA-81147	AF-EA-81247
45U	2220mm	AF-EA-81045	AF-EA-81145	AF-EA-81245
42U	2090mm	AF-EA-81042	AF-EA-81142	AF-EA-81242
27U	1420mm	AF-EA-81027		

### Features at a glance

- Conformance to International Standards: IEC 60297-2, ANSI/EIA RS-310-D, DIN 41494
- 1U = 44.45mm
- Material: Sheet Steel
- Finishing: Epoxy Polyester Powder Coated
- Available depth: 600, 800mm
- Quick release front & rear doors complete with swing handle lock
- Liff off design side panels with keylock
- Perforated doors achieve at least 65% ventilation
- Cable entry access from top and bottom
- Rack mounting compatible with most server brands
- Accessories available to complement mounting of non-19" equipment

*\*Non-stock size. Please check with our sales team on delivery lead time*

## External and Internal Dimensions

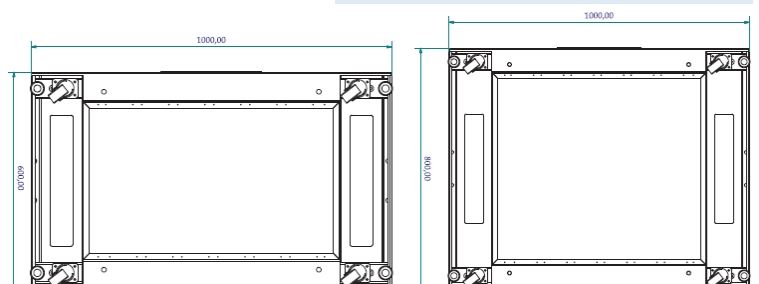


### Cable Entry At Top Frame

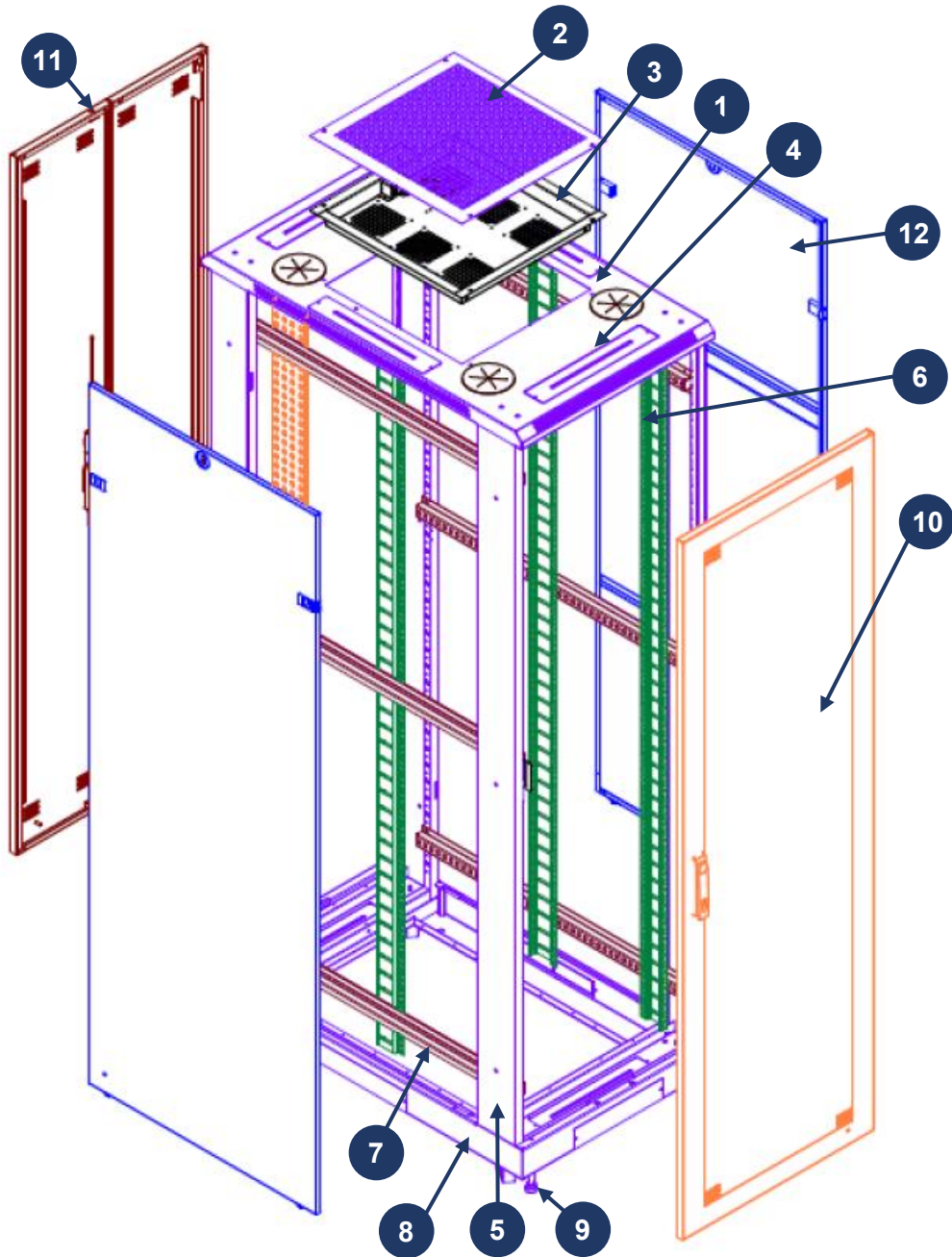
- 4 default cable entry with removable cover plates
- 4 additional round cable entry opening with rubber grommet to separate network from power cables
- Centre opening is for exhaust fan heat dissipation
- If exhaust fans are not needed, can remove the cover plate for cable entry purpose

### Cable Entry At Bottom Frame

- 1 fully-open centre cable entry
- 2 default cable entry at front and back
- 4 sided cable entry with cover plate
- Floor mounting available by default



# AF-EA Series Equipment Racks - Breakdown of Parts



## Standard Colours

**Colour:**  
RAL 9004 Black

*Options of other colours are available.  
Please inquire with our sales engineers.*

## Parts List

- |                               |                             |
|-------------------------------|-----------------------------|
| 1. Vented Top Frame           | 7. Panel Mount Support      |
| 2. Fan Tray Cover             | 8. Vented Base Frame        |
| 3. Fan Tray                   | 9. Castors & Levelling Feet |
| 4. Cable Entry w/ Cover Plate | 10. Front Door              |
| 5. Vertical Frame             | 11. Rear Door               |
| 6. 19" Panel Mount            | 12. Side Panel              |

# AF-EA Series Equipment Racks

## - General Specifications

<p><b>Vented Top Frame</b> Steel: 1.5mm Height: 40mm - 1pc per rack</p>	<ul style="list-style-type: none"> <li>• Bolted securely at 4 corners to ensure rigidity and strength of main frame</li> <li>• Ventilation on all sides for effective heat dissipation</li> <li>• Fan tray mounted from top in for easy access and/ or removal</li> <li>• Cable entry from 4 sides available</li> <li>• EA design has additional 4x round cable entry opening with rubber grommet</li> </ul>
<p><b>Vertical Frame</b> Steel: 1.5mm - 2pcs per rack</p>	<ul style="list-style-type: none"> <li>• Fully welded vertical frame to ensure optimal strength</li> <li>• PDUs will be mounted within the frame to eliminate equipment obstruction</li> <li>• Rack ganging holes are pre-punched and covered with plastic grommet</li> </ul>
<p><b>Base Frame</b> Steel: 1.5mm Height: 80mm - 1pc per rack</p>	<ul style="list-style-type: none"> <li>• Bolted securely at 4 corners to ensure rigidity and strength of main frame</li> <li>• Base cable entry available by removing default cover plates</li> <li>• Catered for mounting of castors and levelling feet and floor mounting</li> <li>• EA design has standard cable entry in the centre and cable entry with cover plate on all 4 sides</li> </ul>
<p><b>19" Panel Mount</b> Steel: 2.0mm - 4pcs per rack</p>	<ul style="list-style-type: none"> <li>• Punched with a row of square holes complying to IEC 60297 for the mounting of shelves, M6 cage nuts and rack mounted equipment</li> <li>• Silk-screened "U" indicators for easy mounting of equipment</li> <li>• Designed to accommodate rack mounting of most server brands</li> <li>• Mounted to panel mount support for ease of adjusting to required position</li> </ul>
<p><b>Panel Mount Support</b> Steel: 1.5mm Height: 21mm - 4-8pcs per rack</p>	<ul style="list-style-type: none"> <li>• Punched with a row of square holes for mounting of 19" panel mount, cable trays and copper earthing bar</li> <li>• Square holes enable ease of adjusting 19" panel mount position</li> <li>• Mounted between 2 vertical frames for added strength to the main frame</li> </ul>
<p><b>Doors</b> Steel: 1.5mm - 2pcs per rack</p>	<ul style="list-style-type: none"> <li>• Options of Tempered Glass, Perforated and Split Perforated available</li> <li>• Default spring latch design for quick removal without tools</li> <li>• Supplied standard with swing handle lock</li> <li>• Up to date perforation design with at least 65% true ventilation</li> </ul>
<p><b>Side Panels</b> Steel: 1.5mm - 2pcs per rack</p>	<ul style="list-style-type: none"> <li>• Liftoff side panels with quick release latches and lock</li> <li>• Internal stiffener for added strength</li> <li>• Mounted flushed to the main frame for aesthetically pleasing outlook</li> <li>• Internally secured side panels are available too</li> </ul>
<p><b>Vented Trays</b> Steel: 1.5mm</p>	<ul style="list-style-type: none"> <li>• Options of 19" mounted or internal mounted type available</li> <li>• Max. weight load of 50kg</li> <li>• Various standard depths available</li> <li>• Customised and heavy duty trays are also available</li> </ul>
<p><b>Sliding Trays</b> Steel: 1.5mm</p>	<ul style="list-style-type: none"> <li>• 19" mounted for ease of installation</li> <li>• Max. weight load of 22kg</li> <li>• Various standard depths available</li> <li>• Customised and heavy duty trays are also available</li> </ul>

Conformance to International Standards: IEC 60297-2, ANSI/EIA RS-310-D, DIN 41494

## Types of Doors Available



Tempered Glass Door with  
Perforated Side



Fully Perforated Door



Fully Perforated Split Door

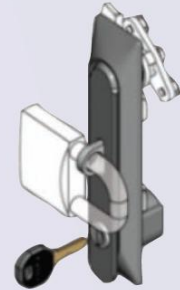


Fully Louvered Door\*

## Types of Swing Handle Available



With Combination Lock



With Padlock Latch



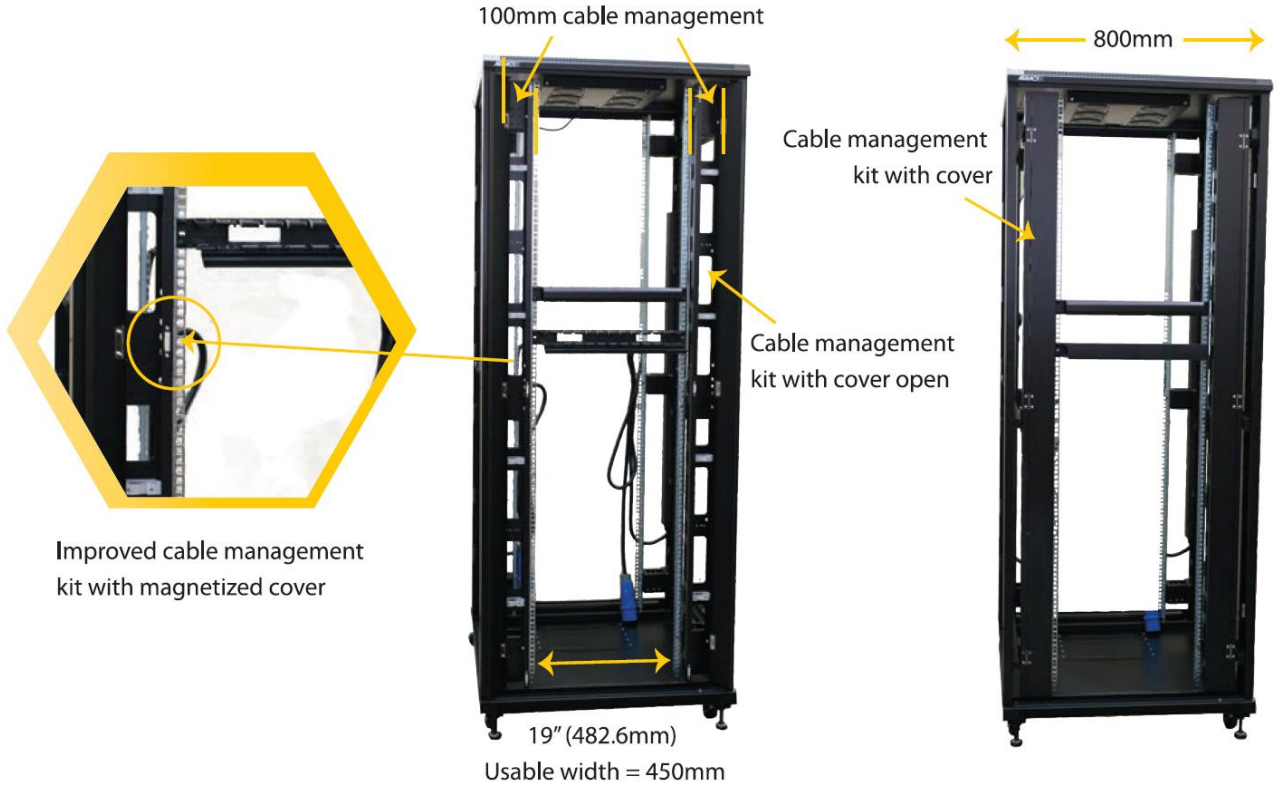
With Profile Cylinder



2FA / Biometric Lock

\*Non-stock size. Please check with our sales team on more info.

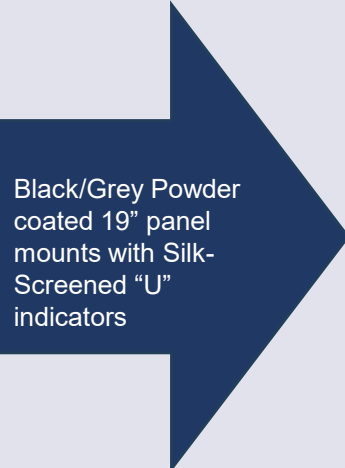
## 19" Conversion cum Cable Management Kit For 800mm width racks



New trend of mounting 2 power distribution units on 1 side of the rack is achievable with our DUAL PDU mounting brackets



Semi-flushed mounted power distribution units prevents obstruction during rear mounting of equipment



Black/Grey Powder coated 19" panel mounts with Silk-Screened "U" indicators





## Vented Tray

- 19" x 370mm(D)
  - 19" x 500mm(D)
  - 19" x 720mm(D)
  - 26" x 370mm(D)
  - 26" x 500mm(D)
  - 26" x 720mm(D)
- For support of non 19" mounted equipments
  - Load capacity of 50kg
  - Supplied with mounting screws
  - Options of Heavy Duty trays are available



## Sliding Tray - Plain

- 19" x 370mm(D)
  - 19" x 500mm(D)
  - 19" x 600mm(D)
- Commonly used for keyboards and also light equipments that need top or side access
  - Front and rear mounting points for ease of assembly
  - Load capacity of 22kg
  - Supplied with mounting screws
  - Options of Heavy Duty sliding trays are available



## Vented Cantilever Tray

- 1U x 19" x 400mm(D)
  - 2U x 19" x 400mm(D)
- Front mounted – 19"
  - For support of light weight equipments
  - Load capacity of 20kg
  - Supplied with mounting screws



## L-Brackets

- 370mm(D)
  - 500mm(D)
  - 720mm(D)
- Designed to support 19" mounted equipments along the depth to prevent slack
  - Load capacity of 50kg
  - Supplied with mounting screws



## 19" Drawer

- 3U x 19" x 370mm(D)
- Front mounted – 19"
  - Supplied default with lock and handle
  - Commonly used to store manuals / accessories / excess cables
  - Load capacity of 20kg
  - Supplied with mounting screws

## Top Mount Fan Tray

- Top mount and top access design for ease of future servicing when required
- 2 to 6 Fans available (dependent on the depth of the rack)
- Designed for heat dissipation with forced ventilation system
- Supplied installed and ready to use



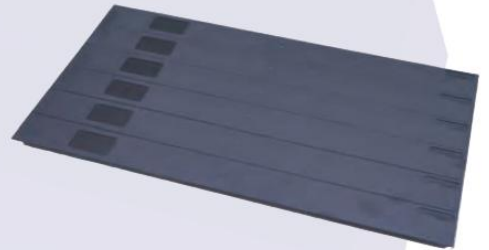
## 19" 1U Fan Tray

- Designed as a supplementary cooling system
- 19" mounted at any position of your preference
- Blower or Exhaust option available
- Complete with LED on/off switch
- Supplied assembled and ready to use



## 19" Blanking Panels - Plastic

- To cover up any unused "U" space within the rack for optimal air flow
- Available from 1U to 6U
- Pop-in design – tool less
- Anti-static and flame retardant to UL94 V-0



## 19" Blanking Panels - Metal

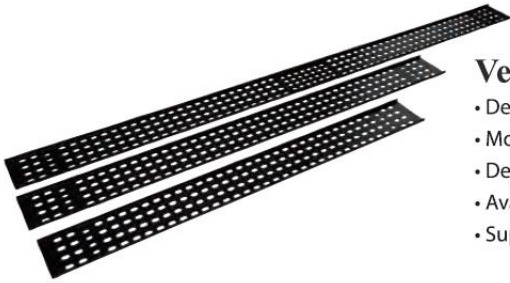
- To cover up any unused "U" space within the rack for optimal air flow
- Available from 1U to 4U
- Powder coated to Black
- Supplied with mounting screws



## Base Seal Skirting Plate

- Plates with magnets for covering of opening below the rack to prevent cold air from escaping into the gap





## Vertical Cable Tray

- Designed for the proper management and tidy routing of cables
- Mounted vertically at the rear or centre of the rack
- Depending on requirements, multiple cable trays can be used
- Available in 4" and 6" widths
- Supplied mounted and ready to use



## Modular Cable Bracket

- Height adjustable cable bracket
- Can be mounted at the rear or front of the rack for cable routing
- Can be used as a replacement for vertical cable tray when lack of space
- Supplied mounted and ready to use



## 19" Cable Management Highway - Metal

- 19" mounted at any position of your preference
- Available in 1U or 2U
- Designed for professional management & tidy routing of cables
- Removable snap on cover ensures complete protection of cables and patch cords
- Supplied with mounting screws



## 19" Cable Management Highway - Plastic

- 19" mounted at any position of your preference
- Designed for professional management & tidy routing of cables
- Removable snap on cover ensures complete protection of cables and patch cords
- Supplied with mounting screws



## 19" Conversion cum Cable Management Kit

- Designed for the proper vertical management and tidy routing of cables in our 26" 800mm width racks
- Mounted on both sides of the rack to convert internal to 19"
- Improved design with magnetized swing front cover
- Supplied installed and ready to use

## Copper Earthing Bar

- For the earthing of equipments
- M6 screw holes pre-drilled
- Mounted vertically at the rear of the rack
- Different heights available
- Vertical or 19" type available
- Supplied assembled or with mounting screws



## Castors & Levelling Feet

- Semi concealed castors design
- Option of normal or heavy duty castors available
- Option of with or without brakes
- Levelling feet for uneven floors
- Option of top access type levelling feet for EA Series racks available
- Supplied assembled



## M6 Hardware Kit

- For assemble of front mounted equipments
- High quality steel screw (black zinc plated) and cage nut coupled with black plastic cup washers
- Supplied in packets of 30, 50 & 100 sets per packet



## Light

- Usually mounted at the top of the rack
- Typically used when equipment rack is in a dark place
- Fluorescent or LED available
- Supplied assembled or with mounting screws



## Brushed Cable Entry Panel

- For front cable thru while maintaining optimal air flow
- Also used for top cable entry and prevention of foreign particles from entering rack
- Please check with our sales personnel on stock status
- Supplied with mounting screws





1. UK PDU c/w Switchless Sockets and 1x Master Switch
2. UK PDU c/w Switchless Sockets and Hot-swap LCD Digital Ammeter
3. UK PDU c/w Switchless Sockets, 1x Master Switch, Surge Protection and RCCB (non-stock)
4. IEC PDU c/w Mixture of C13 and C19 Sockets
5. IEC PDU c/w Mixture of C13 and C19 Sockets and Hot-swap LCD Digital Ammeter



Typical UK Power Strip



13Amp



15Amp



16Amp / 32Amp



IEC C14



IEC C20

Plugs / Connectors Available

# Standard Accessories - PDU



Hot-Swappable Digital Ammeter  
(Voltage, Current, kW & kWh)



Patented integrated plug locking  
device for IEC C13 / 14

C19 Plug Locking



Sockets produced according to PANTONE Colours

*\*Coloured socket PDU lead time will be 4 weeks.*