

AF-EM Series Racks - a cabinet design boasting Aesthetics, Strength and Flexibility coupled with new user-friendly features that offers professional solutions to our valuable clients from the various industries - Audio Visual, Aviation, Banking, BMS, Defence, Education, Finance, Healthcare, Data Centre Hosting, IT, Marine, Networking, Oil & Gas, Security and Telecommunications etc.

Compatible for rack mounting of an array of equipments including branded and third party Servers, DVRs, Multiplexers and Base Stations, users are spoilt for choice with our wide range of AF-EM Series rack variants. Non-standard and customised sizes fabricated to your requirements are also available. Please speak to our friendly and experienced sales engineers. We provide The Complete Solution to your equipment housing needs.



AF EM Series 19" Racks



AF EM Series 26" Racks

AF-EM Series Equipment Racks are manufactured in compliance to International Standards: IEC 60297-2, ANSI/EIA RS-310-D, DIN 41494.

AF EM Series 19" Racks – 600mm Width

"U"	Height	Overall Depth /	Order Number
		600	800
48U*	2340mm	AF-EM-6648	AF-EM-6848
47U	2290mm	AF-EM-6647	AF-EM-6847
45U	2200mm	AF-EM-6645	AF-EM-6845
42U	2070mm	AF-EM-6642	AF-EM-6842
37U	1845mm	AF-EM-6637	AF-EM-6837
32U	1625mm	AF-EM-6632	AF-EM-6832
27U	1400mm	AF-EM-6627	AF-EM-6827
22U	1180mm	AF-EM-6622	AF-EM-6822
18U	1000mm	AF-EM-6618	AF-EM-6818
12U	735mm	AF-EM-6612	AF-EM-6812

AF EM Series 26" Racks – 800mm Width

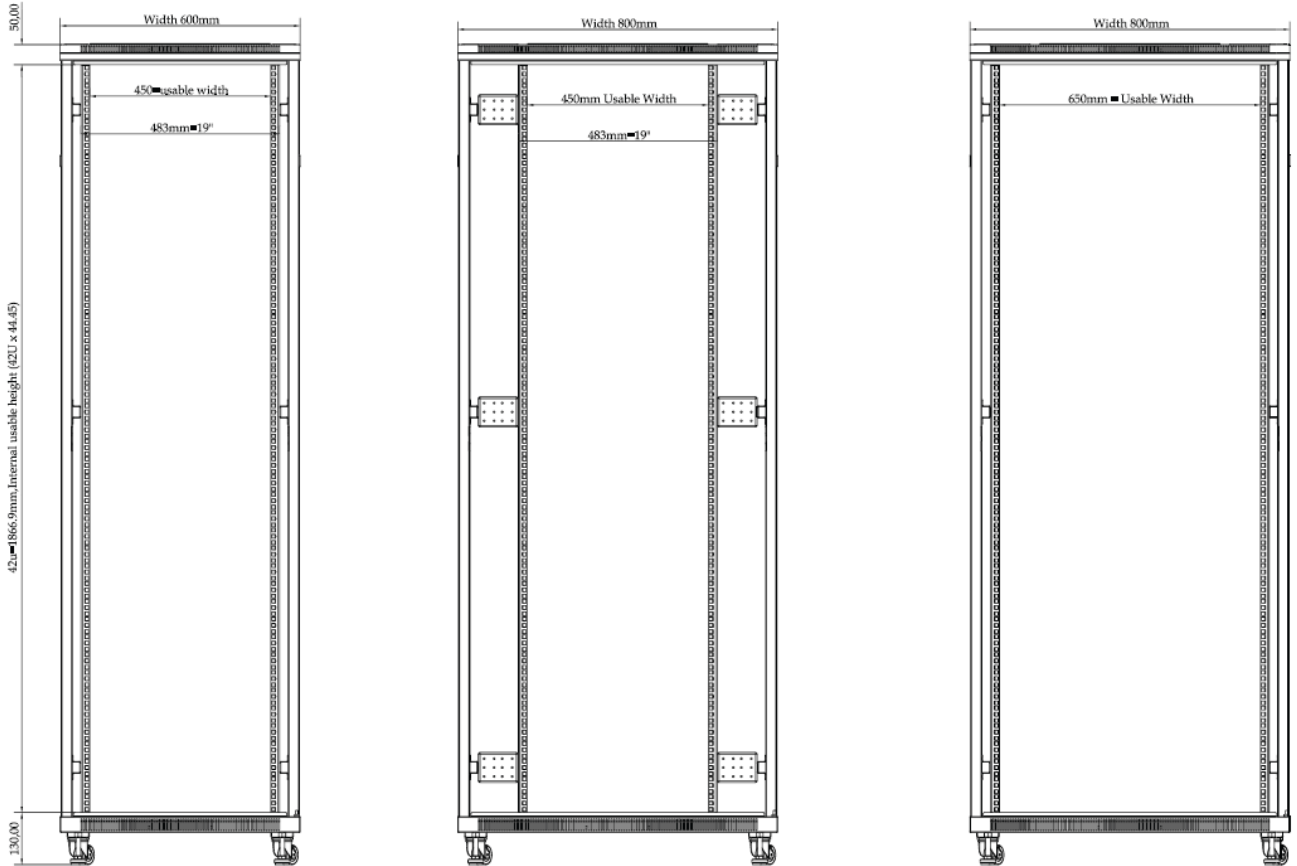
"U"	Height	Overall Depth /	Order Number
		800	
48U*	2340mm	AF-EM-8848	
47U	2290mm	AF-EM-8847	
45U	2200mm	AF-EM-8845	
42U	2070mm	AF-EM-8842	
27U	1400mm	AF-EM-8827	

Features at a glance

- Conformance to International Standards: IEC 60297-2, ANSI/EIA RS-310-D, DIN 41494
- 1U = 44.45mm
- Material: Sheet Steel
- Finishing: Epoxy Polyester Powder Coated
- Available depth: 600, 800mm
- Quick release front & rear doors complete with swing handle lock
- Liff off design side panels with keylock
- Perforated doors achieve at least 65% ventilation
- Cable entry access from top and bottom
- Rack mounting compatible with most server brands
- Accessories available to complement mounting of non-19" equipment

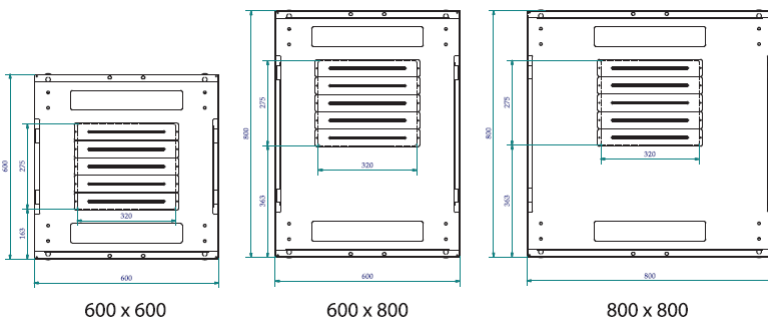
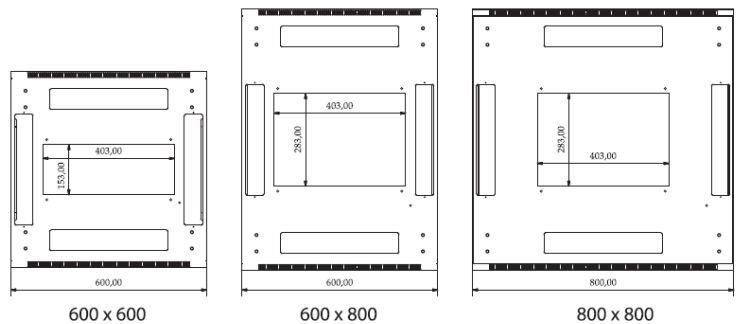
**Non-stock size. Please check with our sales team on delivery lead time*

External and Internal Dimensions



Cable Entry At Top Frame

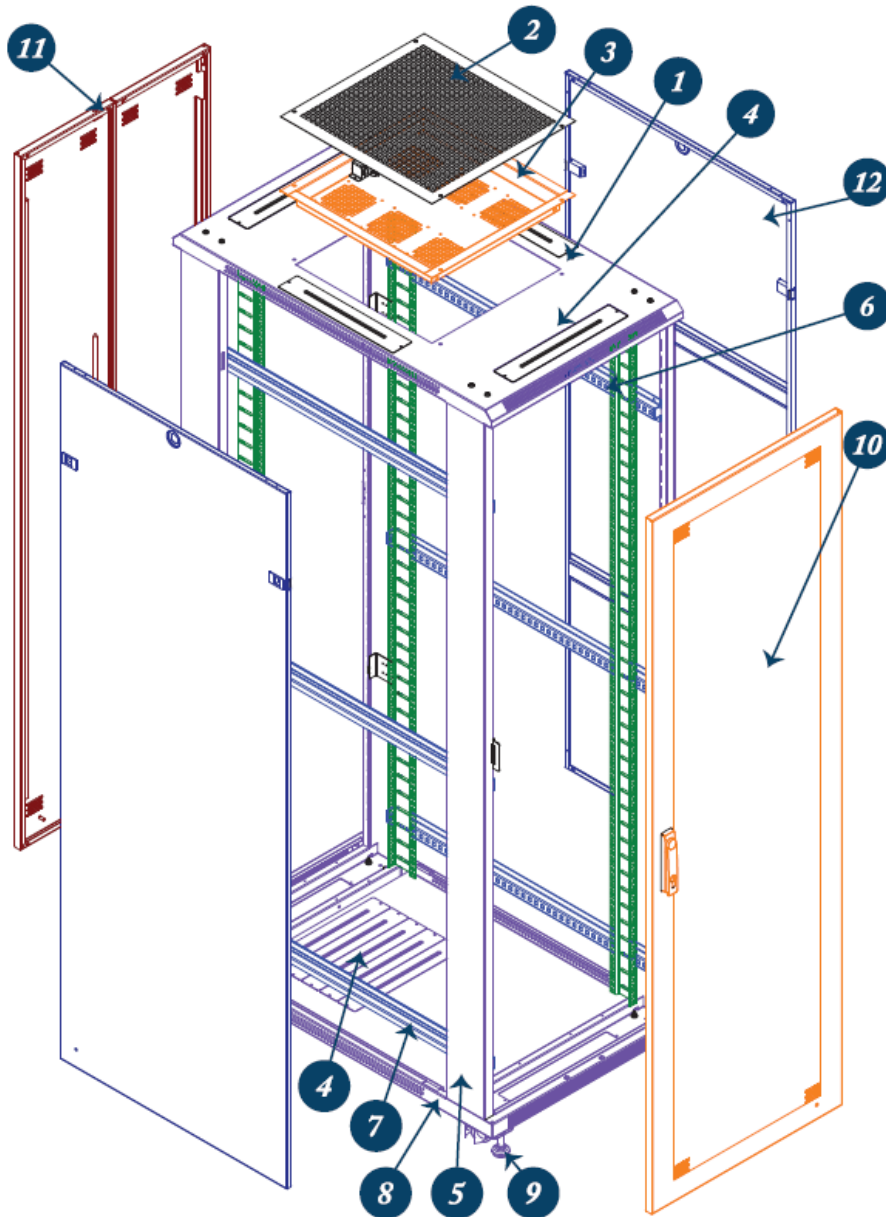
- 4 default cable entry with removable cover plates for ease of separating different types of cables
- Centre opening is for exhaust fan heat dissipation
- If exhaust fans not needed, can remove the cover plate for cable entry purpose



Cable Entry At Bottom Frame

- Default cable entry with removable cover plates
- To add Base Plinth for inter-rack cabling and floor mounting capability

AF-EM Series Equipment Racks - Breakdown of Parts



Standard Colours

Colour B:
RAL 9004 Black

Colour G:
RAL 7035 Light Grey
(Limited Sizes)

Parts List

- | | |
|-------------------------------|-----------------------------|
| 1. Vented Top Frame | 7. Panel Mount Support |
| 2. Fan Tray Cover | 8. Vented Base Frame |
| 3. Fan Tray | 9. Castors & Levelling Feet |
| 4. Cable Entry w/ Cover Plate | 10. Front Door |
| 5. Vertical Frame | 11. Rear Door |
| 6. 19" Panel Mount | 12. Side Panel |

*Options of other colours are available.
Please inquire with our sales engineers.*

AF-EM Series Equipment Racks

- Generic Specifications

<p>Vented Top Frame Steel: 1.5mm Height: 40mm - 1pc per rack</p>	<ul style="list-style-type: none"> • Bolted securely at 4 corners to ensure rigidity and strength of main frame • Ventilation on all sides for effective heat dissipation • Fan tray mounted from top in for easy access and/ or removal • Cable entry from 4 sides available • EA design has additional 4x round cable entry opening with rubber grommet
<p>Vertical Frame Steel: 1.5mm - 2pcs per rack</p>	<ul style="list-style-type: none"> • Fully welded vertical frame to ensure optimal strength • PDUs will be mounted within the frame to eliminate equipment obstruction • Rack ganging holes are pre-punched and covered with plastic grommet
<p>Base Frame Steel: 1.5mm EM Height: 53mm - 1pc per rack</p>	<ul style="list-style-type: none"> • Bolted securely at 4 corners to ensure rigidity and strength of main frame • Base cable entry available by removing default cover plates • Catered for mounting of castors and levelling feet and floor mounting • EA design has standard cable entry in the centre and cable entry with cover plate on all 4 sides
<p>19" Panel Mount Steel: 2.0mm - 4pcs per rack</p>	<ul style="list-style-type: none"> • Punched with a row of square holes complying to IEC 60297 for the mounting of shelves, M6 cage nuts and rack mounted equipment • Silk-screened "U" indicators for easy mounting of equipment • Designed to accommodate rack mounting of most server brands • Mounted to panel mount support for ease of adjusting to required position
<p>Panel Mount Support Steel: 1.5mm Height: 21mm - 4-8pcs per rack</p>	<ul style="list-style-type: none"> • Punched with a row of square holes for mounting of 19" panel mount, cable trays and copper earthing bar • Square holes enable ease of adjusting 19" panel mount position • Mounted between 2 vertical frames for added strength to the main frame
<p>Doors Steel: 1.5mm - 2pcs per rack</p>	<ul style="list-style-type: none"> • Options of Tempered Glass, Perforated and Split Perforated available • Default spring latch design for quick removal without tools • Supplied standard with swing handle lock • Up to date perforation design with at least 65% true ventilation
<p>Side Panels Steel: 1.5mm - 2pcs per rack</p>	<ul style="list-style-type: none"> • Lift off side panels with quick release latches and lock • Internal stiffener for added strength • Mounted flushed to the main frame for aesthetically pleasing outlook • Internally secured side panels are available too
<p>Vented Trays Steel: 1.5mm</p>	<ul style="list-style-type: none"> • Options of 19" mounted or internal mounted type available • Max. weight load of 50kg • Various standard depths available • Customised and heavy duty trays are also available
<p>Sliding Trays Steel: 1.5mm</p>	<ul style="list-style-type: none"> • 19" mounted for ease of installation • Max. weight load of 22kg • Various standard depths available • Customised and heavy duty trays are also available

Conformance to International Standards: IEC 60297-2, ANSI/EIA RS-310-D, DIN 41494

Types of Doors Available



Tempered Glass Door with
Perforated Side



Fully Perforated Door



Fully Perforated Split Door

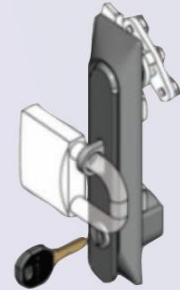


Fully Louvered Door*

Types of Swing Handle Available



With Combination Lock



With Padlock Latch



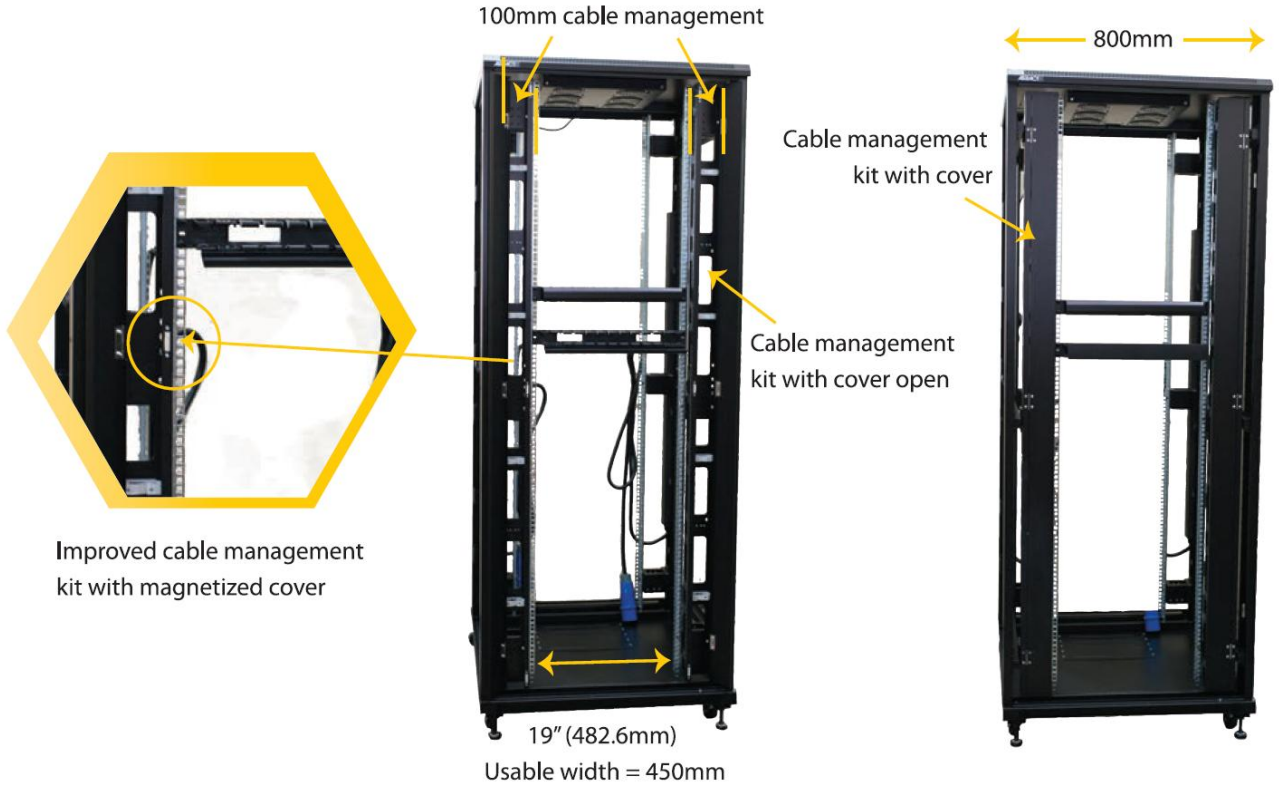
With Profile Cylinder



2FA / Biometric Lock

*Non-stock size. Please check with our sales team on more info.

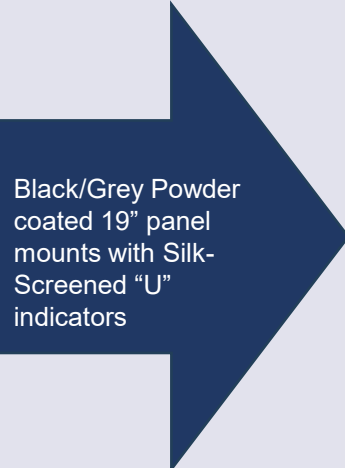
19" Conversion cum Cable Management Kit For 800mm width racks



New trend of mounting 2 power distribution units on 1 side of the rack is achievable with our DUAL PDU mounting brackets



Semi-flushed mounted power distribution units prevents obstruction during rear mounting of equipment



Black/Grey Powder coated 19" panel mounts with Silk-Screened "U" indicators





Vented Tray

- 19" x 370mm(D)
 - 19" x 500mm(D)
 - 19" x 720mm(D)
 - 26" x 370mm(D)
 - 26" x 500mm(D)
 - 26" x 720mm(D)
- For support of non 19" mounted equipments
 - Load capacity of 50kg
 - Supplied with mounting screws
 - Options of Heavy Duty trays are available



Sliding Tray - Plain

- 19" x 370mm(D)
 - 19" x 500mm(D)
 - 19" x 600mm(D)
- Commonly used for keyboards and also light equipments that need top or side access
 - Front and rear mounting points for ease of assembly
 - Load capacity of 22kg
 - Supplied with mounting screws
 - Options of Heavy Duty sliding trays are available



Vented Cantilever Tray

- 1U x 19" x 400mm(D)
 - 2U x 19" x 400mm(D)
- Front mounted – 19"
 - For support of light weight equipments
 - Load capacity of 20kg
 - Supplied with mounting screws



L-Brackets

- 370mm(D)
 - 500mm(D)
 - 720mm(D)
- Designed to support 19" mounted equipments along the depth to prevent slack
 - Load capacity of 50kg
 - Supplied with mounting screws



19" Drawer

- 3U x 19" x 370mm(D)
- Front mounted – 19"
 - Supplied default with lock and handle
 - Commonly used to store manuals / accessories / excess cables
 - Load capacity of 20kg
 - Supplied with mounting screws

Top Mount Fan Tray

- Top mount and top access design for ease of future servicing when required
- 2 to 6 Fans available (dependent on the depth of the rack)
- Designed for heat dissipation with forced ventilation system
- Supplied installed and ready to use



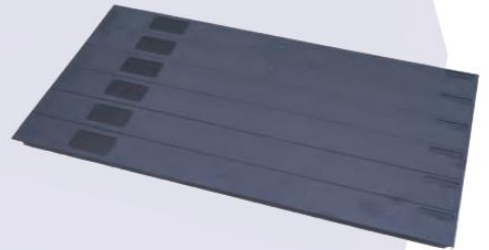
19" 1U Fan Tray

- Designed as a supplementary cooling system
- 19" mounted at any position of your preference
- Blower or Exhaust option available
- Complete with LED on/off switch
- Supplied assembled and ready to use



19" Blanking Panels - Plastic

- To cover up any unused "U" space within the rack for optimal air flow
- Available from 1U to 6U
- Pop-in design – tool less
- Anti-static and flame retardant to UL94 V-0



19" Blanking Panels - Metal

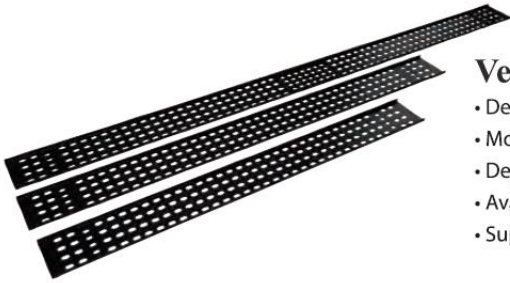
- To cover up any unused "U" space within the rack for optimal air flow
- Available from 1U to 4U
- Powder coated to Black
- Supplied with mounting screws



Base Seal Skirting Plate

- Plates with magnets for covering of opening below the rack to prevent cold air from escaping into the gap





Vertical Cable Tray

- Designed for the proper management and tidy routing of cables
- Mounted vertically at the rear or centre of the rack
- Depending on requirements, multiple cable trays can be used
- Available in 4" and 6" widths
- Supplied mounted and ready to use



Modular Cable Bracket

- Height adjustable cable bracket
- Can be mounted at the rear or front of the rack for cable routing
- Can be used as a replacement for vertical cable tray when lack of space
- Supplied mounted and ready to use



19" Cable Management Highway - Metal

- 19" mounted at any position of your preference
- Available in 1U or 2U
- Designed for professional management & tidy routing of cables
- Removable snap on cover ensures complete protection of cables and patch cords
- Supplied with mounting screws



19" Cable Management Highway - Plastic

- 19" mounted at any position of your preference
- Designed for professional management & tidy routing of cables
- Removable snap on cover ensures complete protection of cables and patch cords
- Supplied with mounting screws



19" Conversion cum Cable Management Kit

- Designed for the proper vertical management and tidy routing of cables in our 26" 800mm width racks
- Mounted on both sides of the rack to convert internal to 19"
- Improved design with magnetized swing front cover
- Supplied installed and ready to use

Copper Earthing Bar

- For the earthing of equipments
- M6 screw holes pre-drilled
- Mounted vertically at the rear of the rack
- Different heights available
- Vertical or 19" type available
- Supplied assembled or with mounting screws



Castors & Levelling Feet

- Semi concealed castors design
- Option of normal or heavy duty castors available
- Option of with or without brakes
- Levelling feet for uneven floors
- Option of top access type levelling feet for EA Series racks available
- Supplied assembled



M6 Hardware Kit

- For assemble of front mounted equipments
- High quality steel screw (black zinc plated) and cage nut coupled with black plastic cup washers
- Supplied in packets of 30, 50 & 100 sets per packet



Light

- Usually mounted at the top of the rack
- Typically used when equipment rack is in a dark place
- Fluorescent or LED available
- Supplied assembled or with mounting screws



Brushed Cable Entry Panel

- For front cable thru while maintaining optimal air flow
- Also used for top cable entry and prevention of foreign particles from entering rack
- Please check with our sales personnel on stock status
- Supplied with mounting screws





1. UK PDU c/w Switchless Sockets and 1x Master Switch
2. UK PDU c/w Switchless Sockets and Hot-swap LCD Digital Ammeter
3. UK PDU c/w Switchless Sockets, 1x Master Switch, Surge Protection and RCCB (non-stock)
4. IEC PDU c/w Mixture of C13 and C19 Sockets
5. IEC PDU c/w Mixture of C13 and C19 Sockets and Hot-swap LCD Digital Ammeter



Typical UK Power Strip



13Amp



15Amp



16Amp / 32Amp



IEC C14



IEC C20

Plugs / Connectors Available



Hot-Swappable Digital Ammeter
(Voltage, Current, kW & kWh)



Patented integrated plug locking
device for IEC C13 / 14

C19 Plug Locking



Sockets produced according to PANTONE Colours

**Coloured socket PDU lead time will be 4 weeks.*